

Instruction Sheet

Follow these instructions to install the Probe Guard in Tube Fryers.
Order 130252832 tool to install the kit.

*** NOTE:** If the tubes are allowed to cool, a wrench or hand may be used in place of the tool to hold the bottom guard in place when tightening.

Subject: 8263840 Tube Fryer Probe Guard Kit Instructions

12.11.2024

In This Kit

Part #	Description	Qty
130256362	BOLT, ¼-20 X 6" SS	1
130252845	BOLT, ¼-20 X 5.5" SS	1
130252846	BOLT, ¼-20 X 4" SS	1
130256360	GUARD, SENSOR BOTTOM WELD ASSY	1
130252821	GUARD, SENSOR TOP	1
8198057	PROBE GUARD KIT INSTRUCTIONS	1

- Turn off the fryer.
- Drain the oil from the frypot.
- Using the photo as a reference for orientation, slide the the top guard on the bolt (see Figure 1).
- Using the photo as a reference for orientation, screw the bottom guard assembly onto the bolt (see Figure 2). Use the 6" bolt for 6" HD Tubes. Use the 4" bolt for 4" Non-HD tubes Use the 5.5" bolt for 5" Non-HD Tubes.
- Using pliers, twist the pliers and distort the last two threads of the bolt, so the nut resists unscrewing (see Figure 3). **WARNING: Skipping this step can allow the bottom guard assembly to loosen and fall off, which may cause damage to the drain.****
- Tighten the bolt until there is resistance on the bottom threads (see Figure 4).
- Insert the guard vertically, starting at the rear of Figures 5 & 6).
- Slide the assembly up within approximately and inch or a fingers distance from the tip of the temperature probe (see Figure 7).

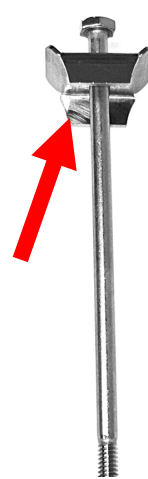


Figure 1

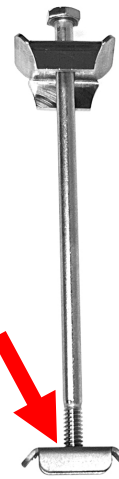


Figure 2

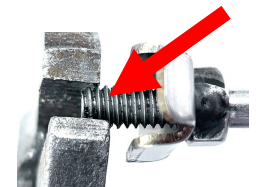


Figure 3

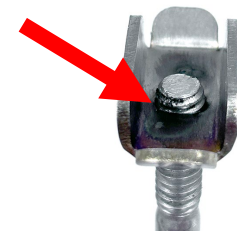


Figure 4

the frypot as shown (see

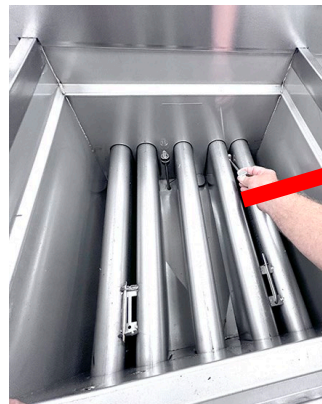


Figure 5



Figure 6

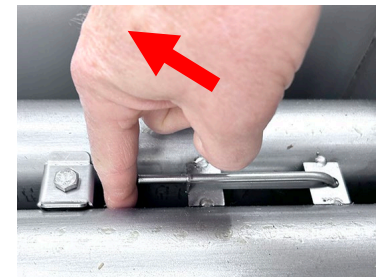


Figure 7

9. Slide the tool down between the tubes and under the bottom guard as shown (see Figure 8).
10. Slide the tool under the bottom guard as shown, in a "T" formation under the tubes (see Figure 9).
11. **While holding the bottom guard horizontal under the two tubes with the tool or a wrench or hand if cool, tighten the bolt until snug. Ensure the probe guard is tightened against the tubes.**
12. Fill the frypot with oil.
13. Repeat steps on any adjacent frypots.



Figure 8

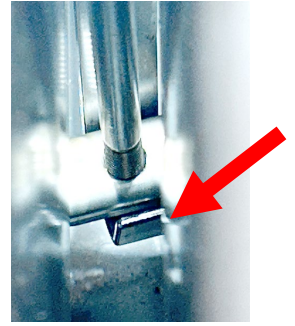


Figure 9